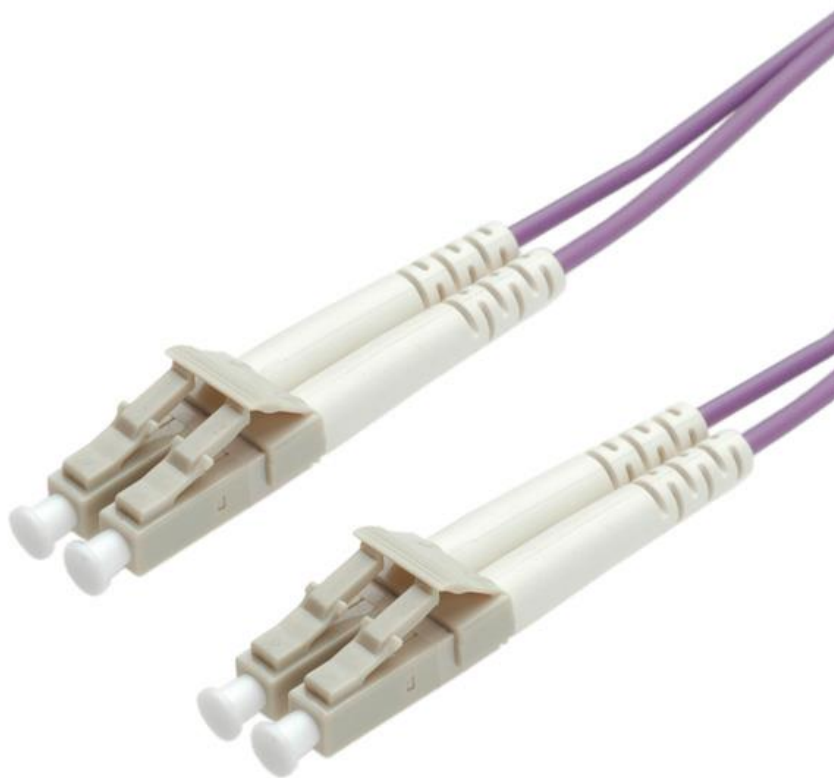




Datenblatt - Fiche technique - Data sheet

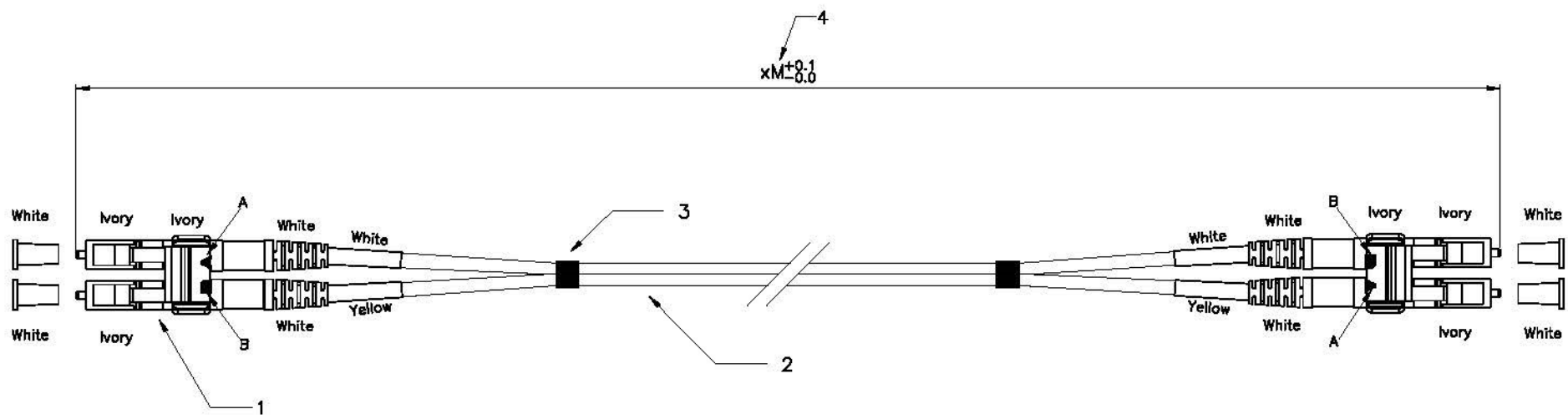
**21.15.8757**



ROLINE LWL-Kabel 50/125 $\mu$ m OM4, LC/LC, violett, 20m

ROLINE Câble FO 50/125 $\mu$ m, LC/LC, OM4, violet, 20m

ROLINE Fibre Optic Jumper Cable, 50/125  $\mu$ m, LC/LC, OM4, purple, 20 m



21.15.8756	15m	Erica violet
21.15.8757	20m	Erica violet

**Specification:**

1. Connector Type : LC Multimode. (easy removable clip and Short Boot)
2. Cable Type :  
 2-1 Zipcord Cable,  $\phi 2.0\text{mm}$ , OM4 50/125um Multimode. (550M/10G Fiber)  
 2-2 Cable Jacket : Erica violet, PVC Material.
3. Shrink Tube
4. Length : 15m and 20m

**Performance:**

- a. Insertion Loss :  $< 0.5 \text{ dB}$
- b. Fiber Extension :  $-0.05\mu\text{m} < H < +0.05\mu\text{m}$
- c.  $\phi 1.25\text{mm}$  Ferrule End-face Radius :  $7 < R < 25\text{mm}$
- d. Apex Offset :  $< 50\mu\text{m}$
- e. Increase in insertion loss after 500 mating :  $0.2 \text{ dB Max}$
- f. Operating Temperature :  $-20^\circ$  to  $+70^\circ$
- g. Storage Temperature :  $-40^\circ$  to  $+80^\circ$



"#": Matching DIM. "*": Important DIM. Others General DIM.	DRAWING	08.AUG.2013	
	CHECK	08.AUG.2013	
	APPROVAL	08.AUG.2013	
GENERAL TOLERANCE OF DIMENSIONS	ITEM NO. 21.15.8756, 21.15.8757		
X.XXX $\pm 0.005$ X.XX $\pm 0.05$ X.X $\pm 0.1$	SCALE	1/1 (A4)	DESC. ROLINE Fiber Optic Cable, OM4, LC/LC, 50/125um, Erica violet
	UNIT	mm	
	DRAWING CLASSIFICATION		S SHEET 1 OF 1

No.	MODIFIED AREA	ORIGINAL	MODIFY	DATE	MODIFIER